

# The EES...

## Entry/Exit System (EES) Automated Self-Service System

### ...provides for

- automatic registration of non-EU nationals each time they cross a Schengen external border
- gradual reduction in waiting times at passport control
- simplification and automation of border procedures



### ...applies\* to

- non-EU nationals travelling for a short stay of up to 90 days within a 180-day period
- visa-required travellers  
→ visa-exempt travellers



### ...collects your

- full name, date of birth, nationalities, sex
- travel document
- facial image and/or fingerprints



### ...records the

- date and place of entry into and exit from a European country using the EES
- refusals of entry, if this is the case



Entry  
Exit  
System

\* Some exceptions apply.

1

Where available, travellers with a biometric passport can present their travel documents at self-service systems. Border guards will help and/or oversee the process



2

The traveller must provide their documents and biometric data (facial images and fingerprints) at the self-service system



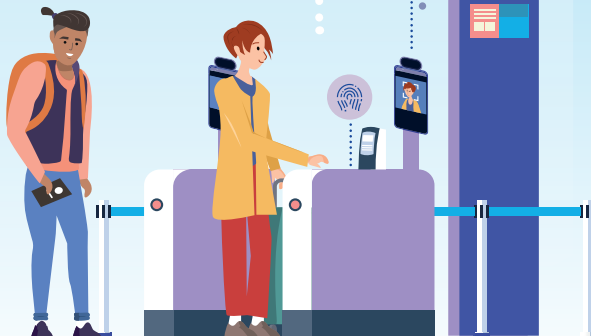
3

A border guard will verify the information received through self-service system, ask questions if needed, and then authorise or refuse entry to the traveller, which will be recorded in the system



4

The traveller benefits from a smoother and more efficient border crossing process



#TravelToEurope

Scan the QR code to learn more ▶

